



Tumi Resources

Committed to Silver Exploration

with associated gold and base metals

SWEDEN



- Tumi owns ten mineral properties in the Bergslagen district of south-central Sweden. The Bergslagen District is highly mineralized and contains significant current and historic mines including Zinkgruvan, Garpenberg, Sala and Falun.
- Tumi has three drill ready targets in Sweden: Sala (Phase 2), Vitturn and Tomtebo.
- At Sala, a diamond drill program has been completed totaling 2,282m in ten holes. Results from the drill program have been announced and are very encouraging.
- An IP anomaly at Vitturn exceeding 400m in length and located along strike from known resource-grade mineralization is drill ready. An airborne EM and IP anomaly immediately NE of the old Tomtebo mine is also drill ready.



MEXICO



- 100% rights to five mineral properties in the states of Jalisco and Sonora.
- Two projects are of priority for Tumi's 2009 exploration program: El Colorado and La Trini.
- At El Colorado, Tumi has discovered a prospective zone covering an area roughly 4.5km NW-SE by 1km SW-NE overlying extensive areas of red soil. Initial soil sampling lines have revealed highly anomalous silver values. Drilling is proposed for this area.
- At La Trini, on completion of three separate drill programs, a recently completed resource calculation has increased the historical resources by about 25%. The calculation was undertaken by an independent qualified geologist in keeping with Canadian NI 43-101 requirements. Current resources are:

Category	Ag Cut-off (g/t)	Tonnes	Avg. Grade Ag (g/t)	Avg. Grade Au (g/t)
Indicated	30	1,661,359	121.3	0.88
Inferred	30	192,880	98.6	0.92



Corporate Summary

Stock Symbols

TSXV - TM

OTCBB - TUMIF

Frankfurt - TUY (WKN 251 738)

Share Capital

Issued: 30,295,706

• Options 1,942,000

• Warrants 2,567,000

Fully Diluted: 34,804,706

Management

David A. Henstridge, B.Sc. (Hons.)
FAusIMM, MAIG, MGSAust
President & CEO

Nick DeMare, CA
Director

Harvey Lim, CA
Director

Prime Technical Consultants

Gil Leathley, Mining Engineer
John Nebocat, Geological Engineer

Corporate Secretary

Mariana Bermudez
T: 604.699.0202
F: 604.683.1585
E: mbermudez@chasemgt.com

Head Office

Suite 1305, 1090 West Georgia St.
Vancouver, BC V6E 3V7 Canada

Website

www.tumiresources.com

Investor Relations Contact

Mining Interactive Corp.

Nick Nicolaas

T: 604.657.4058

F: 604.685.1631

La Trini, Mexico

- Completion of fifty RC drill holes totaling 6,493m in three drill campaigns.
- Best drill results included:
 - * 18.3m averaging 150 g/t silver and 3.1 g/t gold in hole TRRC-6
 - * 24.4m averaging 1,629 g/t silver and 6.4 g/t gold in hole TRRC-32
 - * 20.3m averaging 225 g/t silver and 0.42 g/t gold in hole TRRC-48
- 400m long by 200m wide northerly trending mineralized zone.
- Tellurium discovery - assaying from a high of 4,362 ppm to below the detection level of 10 ppm. Further analysis will be undertaken.
- NI 43-101 compliant resource calculation increased mineral resources by about 25% to approximately 6.48 million troy ounces Ag and 46,900 troy ounces Au in the Indicated category and 611,400 troy ounces Ag and 5,700 troy ounces Au in the Inferred category.

Other Projects, Mexico

- *El Colorado* - Anomalous areas defined by the stream sampling program were followed up with mapping, rock chip sampling and soil geochemical lines. Large areas of anomalous silver have been defined in the soil profiles and drilling is proposed.
- *Batamote* - farmed out to High Desert Gold Corporation to earn up to 70% by spending US\$5 million in expenditure over six years.

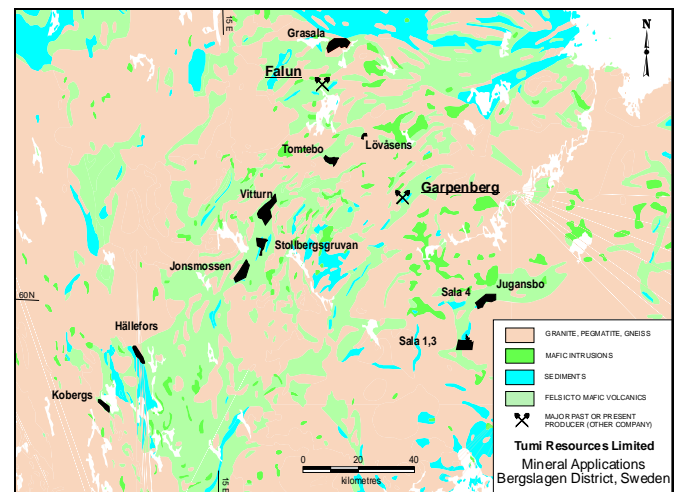
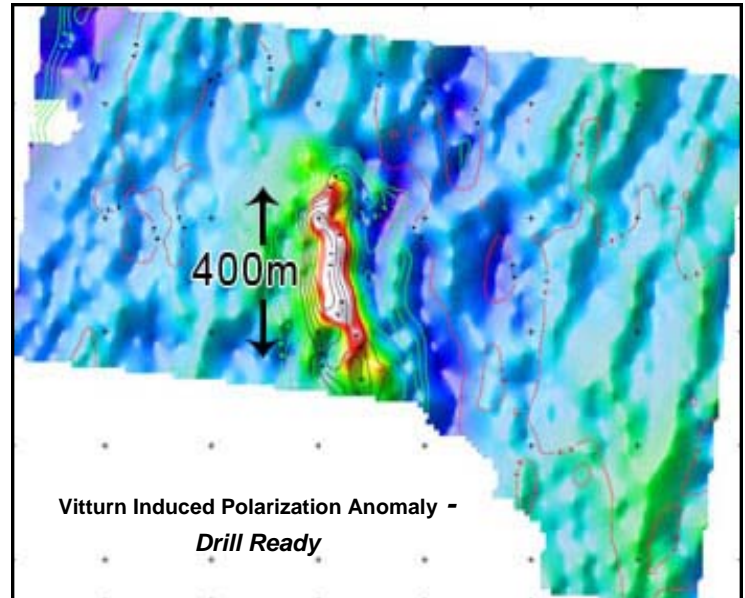


Sala, Sweden

- Sweden's largest historic silver producer, the Sala mine operated for nearly 400 years and produced some of the richest silver ores in the world. More than 200 million ozs of silver are estimated to have been recovered with reported grades of up to 7,000 g/t Ag.
- Ground EM completed to help locate any undiscovered mineralization within the property; drill targets defined to the west of the old ore-body.
- Ten holes totaling 2,282m have been completed. Best results from the program include:
 - * 6.6m at 76 g/t silver, 7% zinc and 1.1% lead (Hole 08-001).
 - * 7.1m at 81 g/t silver and 10.4% zinc (Hole 08-003)
 - * 22.1m at 34 g/t silver and 6.3% zinc (Hole 08-003).
 - * 9.85m at 203 g/t silver and 6.4% zinc (Hole 08-003).
 - * 6.9m at 66 g/t silver and 7.1% zinc (Hole 08-008).

Other Projects, Bergslagen District, Sweden

- *Vitturn* - One of the better known historic mineral fields in the Bergslagen District is Stollberg where numerous deep abandoned base metal and silver mines and workings occur along a north-south trending belt over a distance of 12kms. At the northern end of the field the Company owns the Vitturn 1 and 2 licences and believes the host mineral sequence may extend under till cover into these licences. In order to test the theory, the Company contracted SMOY of Finland to undertake a gradient array IP survey. The survey totaled about 19 line kms and defined an anomaly trending NNW for about 400m located immediately along strike from known resource-grade sulphide mineral drill intersections owned by another company. Vitturn is drill ready.
- *Tomtebo* - Historic mine that produced small amounts of Cu-Zn-Ag ore. Airborne EM has been completed where preliminary analysis support the existence of a previously unexplained EM conductor located 300m NE of the largest workings at Tomtebo. Two lines of dipole-dipole IP across the best conductive zone has been completed and confirmed the conductor. Tomtebo is drill ready.
- *Jonsmossen* - The Company has also staked two new licence areas on the southern extension to the Stollberg field known as Stollberg 2 and Jonsmossen. Last year, Company geologists obtained elevated base-metal results in a sample taken from an old pit on the Stollberg 2 claim. Both areas have been flown by airborne EM.
- *Stollbergsgruvan* - Covers a part of the central-southern end of the Stollberg ore field which contains more than 25 VMS deposits along a 4km long manganese-rich horizon. Deposits are described as "massive sphalerite-galena with high silver grades." Airborne EM survey has been completed.
- *Jugansbo, Sala 4, Kobergs and Hällefors* - farmed out to Goldsearch Limited (ASX-GSE) who may earn up to a 70% interest in the properties by incurring exploration expenditures of 1 million euros within 3 years.



Forward Looking Statements. This Company document contains certain "forward-looking" statements and information relating to the Company that are based on the beliefs of the Company's management as well as assumptions made by and information currently available to the Company's management. Such statements reflect the current risks, uncertainties and assumptions related to certain factors including, without limitations, competitive factors, general economic conditions, customer relations, relationships with vendors and strategic partners, the interest rate environment, governmental regulation and supervision, seasonality, technological change, changes in industry practices, and one-time events. Should any one or more of these risks or uncertainties materialize, or should any underlying assumptions prove incorrect, actual results may vary materially from those described herein. March 2009.