



Tumi Resources

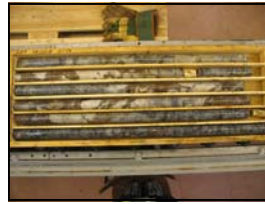
Committed to Silver Exploration

with associated gold and base metals

SWEDEN - Four Drill Ready Targets



- The Bergslagen District is highly mineralized and contains significant current and historic mines including Zinkgruvan, Garpenberg, Sala and Falun. All ten of Tumi's licences are 100% owned.
- At Sala, a diamond drill program has been completed totaling 2,282m in ten holes. Results from the drill program have been announced and are very encouraging and further drilling is justified.
- An IP anomaly at Vittarn exceeding 400m in length and located along strike from known resource-grade mineralization is drill ready.
- Tumi has drill ready targets defined by airborne EM and ground IP at the Tomtebo and Jonsmossen licences.



MEXICO - La Trini Silver Resource



- 100% interest in the La Trini mineral claim, Hostotipaquillo mining district, Jalisco State, Mexico.
- 50 reverse circulation drill holes in three programs with results including 18.3m averaging 3.1 g/t gold and 150 g/t silver in hole TRRC-6 and 24.4m averaging 6.4 g/t gold and 1,629 g/t silver in TRRC-32. A resource calculation was undertaken by an independent qualified geologist in keeping with NI43-101 requirements. The current resources:

Category	Ag Cut-off (g/t)	Tonnes	Avg. Grade Ag (g/t)	Avg. Grade Au (g/t)
Indicated	30	1,661,359	121.3	0.88
Inferred	30	192,880	98.6	0.92

- The Company has also farmed out its 35,180 hectare Batamote concession to High Desert Gold Corporation.



Corporate Summary

Stock Symbols

TSXV - TM

OTCBB - TUMIF

Frankfurt - TUY (WKN 251 738)

Share Capital

Issued: 31,447,039

• Options 2,639,600

• Warrants 3,718,333

Fully Diluted: 37,804,972

Management

David A. Henstridge, B.Sc. (Hons.)
FAusIMM, MAIG, MGSAust
President & CEO

Nick DeMare, CA
Director

Harvey Lim, CA
Director

Prime Technical Consultants

Gil Leathley, Mining Engineer
John Nebocat, Geological Engineer

Corporate Secretary

Mariana Bermudez
T: 604.699.0202
F: 604.683.1585
E: mbermudez@chasemgt.com

Head Office

Suite 1305, 1090 West Georgia St.
Vancouver, BC V6E 3V7 Canada

Website

www.tumiresources.com

Investor Relations Contact

Mining Interactive Corp.

Nick Nicolaas

T: 604.657.4058

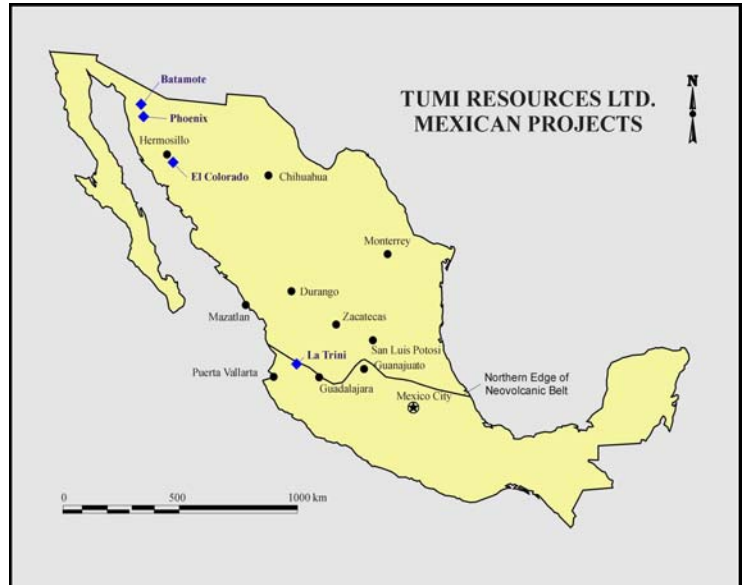
E: nick@mininginteractive.com

La Trini, Mexico

- Completion of fifty RC drill holes totaling 6,493m in three drill campaigns.
- Best drill results included:
 - * 18.3m averaging 150 g/t silver and 3.1 g/t gold in hole TRRC-6
 - * 24.4m averaging 1,629 g/t silver and 6.4 g/t gold in hole TRRC-32
 - * 20.3m averaging 225 g/t silver and 0.42 g/t gold in hole TRRC-48
- 400m long by 200m wide northerly trending mineralized zone.
- Tellurium discovery - assaying from a high of 4,362 ppm to below the detection level of 10 ppm. Further analysis will be undertaken.
- NI 43-101 compliant resource calculation increased historic mineral resources by about 25% to approximately 6.48 million troy ounces Ag and 46,900 troy ounces Au in the Indicated category and 611,400 troy ounces Ag and 5,700 troy ounces Au in the Inferred category.

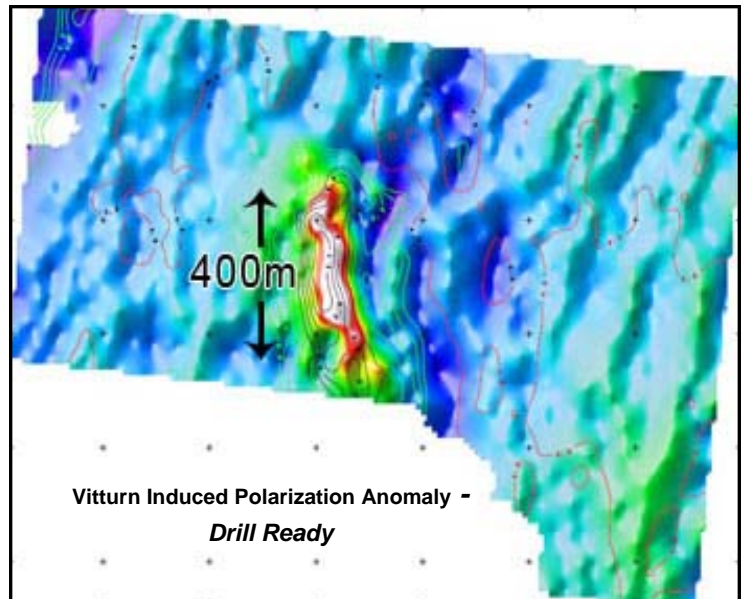
Other Projects, Mexico

- **Batamote** - farmed out to High Desert Gold Corporation to earn up to 70% by spending US\$5 million in expenditure over six years.
- Tumi has an exploration program underway in Sonora seeking a large low-grade precious metal system similar to La Herradura, La Choya and San Francisco mines.



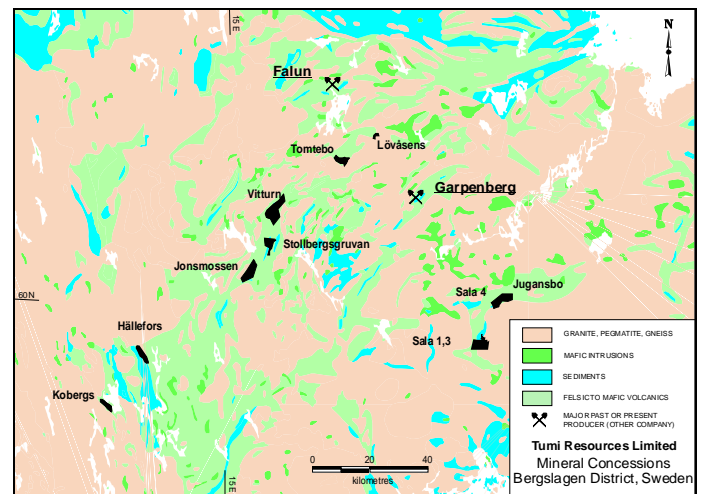
Sala, Sweden

- Sweden's largest historic silver producer, the Sala mine operated for nearly 400 years and produced some of the richest silver ores in the world. More than 200 million ozs of silver are estimated to have been recovered with reported grades of up to 7,000 g/t Ag.
- Ground EM completed to help locate any undiscovered mineralization within the property; drill targets defined to the west of the old mine.
- Ten holes totaling 2,282m have been completed. Best results from the program include:
 - * 6.6m at 76 g/t silver, 7% zinc and 1.1% lead (Hole 08-001).
 - * 7.1m at 81 g/t silver and 10.4% zinc (Hole 08-003)
 - * 22.1m at 34 g/t silver and 6.3% zinc (Hole 08-003).
 - * 9.85m at 203 g/t silver and 6.4% zinc (Hole 08-003).
 - * 6.9m at 66 g/t silver and 7.1% zinc (Hole 08-008).



Other Projects, Bergslagen District, Sweden

- **Vitturn** - One of the better known historic mineral fields in the Bergslagen District is Stollberg where numerous deep abandoned base metal and silver mines and workings occur along a north-south trending belt over a distance of 12kms. At the northern end of the field the Company owns the Vitturn 1 and 2 licences and believes the host mineral sequence may extend under till cover into these licences. In order to test the theory, the Company contracted SMOY of Finland to undertake a gradient array IP survey. The survey totaled about 19 line kms and defined an anomaly trending NNW for about 400m located immediately along strike from known resource-grade sulphide mineral drill intersections owned by another company. Vitturn is drill ready.
- **Tomtebo** - Historic mine that produced small amounts of Cu-Zn-Ag ore. Airborne EM has been completed where preliminary analysis support the existence of a previously unexplained EM conductor located 300m NE of the largest workings at Tomtebo. Two lines of dipole-dipole IP across the best conductive zone has been completed and confirmed the conductor. Tomtebo is drill ready.
- **Jonsmossen** - The Company has discovered two new drill targets within the Jonsmossen licence area. A thorough analysis of the data from an airborne EM survey completed in March 2009 has revealed the existence of two significant anomalies in a prospective stratigraphic horizon, extending from ground level to more than 100m below the surface. A recently completed ground IP survey has confirmed the presence of a chargeability anomaly and Jonsmossen is drill ready.
- **Stollbergsgruvan** - Covers a part of the central-southern end of the Stollberg ore field which contains more than 25 VMS deposits along a 4km long manganese-rich horizon. Deposits are described as "massive sphalerite-galenite with high silver grades." Airborne EM survey has been completed.
- **Jugansbo, Sala 4, and Hällefors** - farmed out to Goldsearch Limited (ASX-GSE) who may earn up to a 70% interest in the properties by incurring exploration expenditures of 1 million euros within 3 years.



Forward Looking Statements. This Company document contains certain "forward-looking" statements and information relating to the Company that are based on the beliefs of the Company's management as well as assumptions made by and information currently available to the Company's management. Such statements reflect the current risks, uncertainties and assumptions related to certain factors including, without limitations, competitive factors, general economic conditions, customer relations, relationships with vendors and strategic partners, the interest rate environment, governmental regulation and supervision, seasonality, technological change, changes in industry practices, and one-time events. Should any one or more of these risks or uncertainties materialize, or should any underlying assumptions prove incorrect, actual results may vary materially from those described herein. March 2010.